

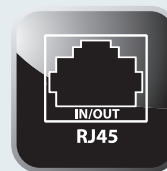
# ALTO SERIES UPS

600VA-2200VA

eco-Alto

## FEATURES

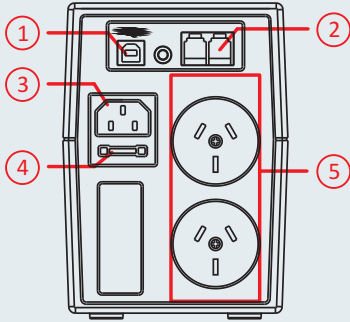
- Ergonomic design
- Australian output plugs
- Wide input voltage range
- Boost and buck AVR
- Compatible with generators
- Audible alarms function
- Full-time surge protection
- Automatic diagnostic on startup
- Cold start function
- Intelligent battery management
- Automatic restart when mains returns
- Automatic battery charging in UPS off mode
- USB communication on 600VA
- USB / RS232 communications on 1000/1400/2200VA
- Supplied with intelligent monitoring and control software
- Protection against short circuit and low battery voltage



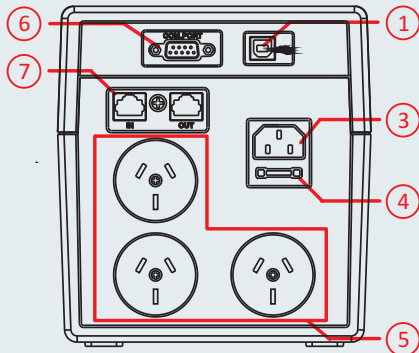
CE  N12754

## SPECIFICATIONS

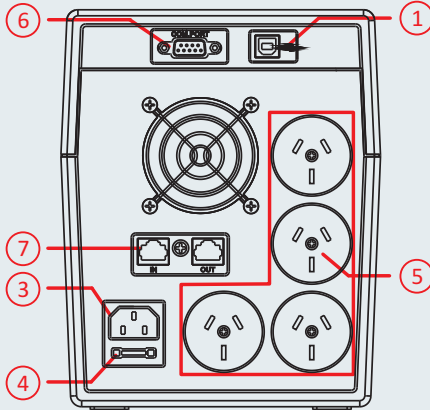
### BACK PANELS



600VA



1000VA/1400VA



2200VA

- 1 - USB communication port
- 2 - RJ11 surge protection
- 3 - IEC input
- 4 - User replaceable fuse
- 5 - Output sockets
- 6 - RS232 communication port
- 7 - RJ45 surge protection

### RUNTIME IN MINUTES

Load VA/W	100VA 60W	200VA 120W	400VA 240W	500VA 300W	600VA 360W	800VA 480W	1000VA 600W	1200VA 720W	1500VA 900W	2000VA 1200W
Alto-600	39	28	14	9	6					
Alto-1000	78	56	24	21	14	9	6			
Alto-1400	91	60	32	28	23	15	10	7		
Alto-2200	156	112	64	59	55	51	36	24	21	9

Model	Alto-600	Alto-1000	Alto-1400	Alto-2200
Capacity	600VA/360W	1000VA/600W	1400VA/840W	2200VA/1320W
<b>Input</b>				
Voltage	230/240V			
AVR voltage range	162V-290V			
Frequency range	40Hz-70Hz			
<b>Output</b>				
Voltage regulation	Batt. mode: 230V ± 10%			
Frequency	50 Hz ± 1Hz			
Waveform	AC mode: sine wave; Battery mode: simulated sinewave			
Transfer time	Typical 2-6ms			
<b>Battery</b>				
Type	Sealed lead acid, maintenance free			
Configuration	1 x 12V/7AH	2 x 12V/7AH	2 x 12V/7AH	2 x 12V/9AH
Charge current(Max)	1.2A	2A	2A	2A
Backup time	> 6 minutes load dependent			
Recharge	6-8 hours to 90% capacity after complete discharge			
<b>Function</b>				
Communication	USB	RS232 & USB		
Surge protection	RJ11	RJ45		
DC start	Yes			
Auto restart	Yes			
AVR	Yes			
Surge protection	720 Joules / 30000A			
Input protection	EN50091-2 (C-Tick)			
Short circuit	User replaceable fuse			
LED indication & audible alarms	AC mode, battery charging, battery mode, battery low, over temperature, overload, short circuit			
<b>Environment</b>				
Audible noise	< 40dB			
Temperature	0 - 40 Degrees C ( non-condensing)			
Humidity	0 - 90%			
<b>Physical</b>				
Australian outlets	2	3	3	4
Dimensions (WxDxH)	298x101x142mm	338x149.3x162mm		380x158x198mm
Net weight	4.25Kg	7.8Kg	8Kg	11.5Kg